

[Software name] Touch panel driver2

[System requirements]

OS: macOS 10.12 / macOS 10.13  
\* This software is not available in the Classic Environment.  
CPU: Intel processor  
Memory: At least 2GB  
Free space on hard drive: At least 1GB  
USB terminal: USB 2.0 compliant

[Introduction of software]

This software is designed to be connected with the SHARP touch display to enable touch panel operation via Mac OS.

[Requirement of use]

This touch panel driver is only compatible with the following SHARP touch displays and option.

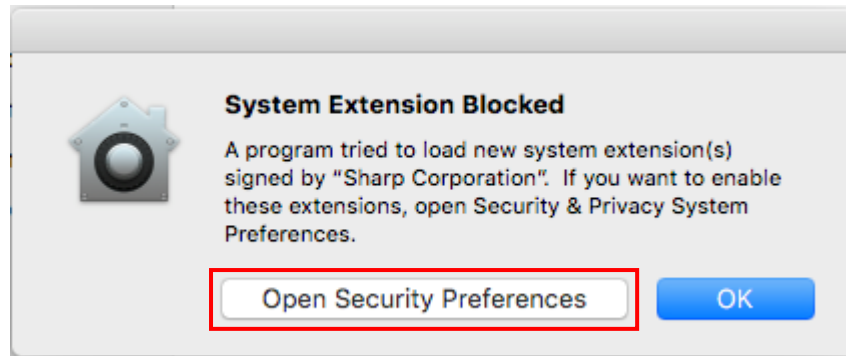
PN-L805H/PN-L705H/PN-L803CA/PN-L803C/PN-L703WA PN-L703W/PN-L703A/PN-L703B  
PN-L603WA/PN-L603W/PN-L603A/PN-L603B/PN-L501C/PN-L401C  
PN-C703B/PN-C603D/PN-C805B/PN-C705B/PN-C605B  
PN-80TH5/PN-70TH5/PN-80TC3A/PN-80TC3/PN-70TW3A/PN-70TW3/PN-70TA3/PN-70TB3  
PN-60TW3A/PN-60TW3/PN-60TA3/PN-60TB3/PN-70SC3/PN-50TC1/PN-40TC1  
PN-80SC5/PN-70SC5/PN-60SC5/PN-65SC1  
PN-ZL01A/PN-ZL02A/PN-ZL03A/PN-ZL06/PN-ZL01/PN-ZL02/PN-ZL03

- \* Touch drivers will not work properly if used with other Sharp touch displays.
- \* You can register up to 8 touch pens in PN-ZL02A/PN-ZL03A/PN-ZL06 and up to 10 touch pens in PN-ZL02/PN-ZL03.
- \* The touch pen bundled with the model below is called the active pen.  
PN-L805H/PN-L705H/PN-L803CA/PN-L803C/PN-L703WA PN-L703W/PN-L703A/PN-L603WA  
PN-L603W/PN-L603A  
PN-80TH5/PN-70TH5/PN-80TC3A/PN-80TC3/PN-70TW3A/PN-70TW3/PN-70TA3/PN-60TW3A  
PN-60TW3/PN-60TA3  
PN-ZL01A/PN-ZL02A/PN-ZL03A/PN-ZL06/PN-ZL01/PN-ZL02/PN-ZL03
- \* The touch pen bundled with the model below corresponds to the pointer function.  
PN-L805H/PN-80TH5/PN-L705H/PN-70TH5/PN-ZL06

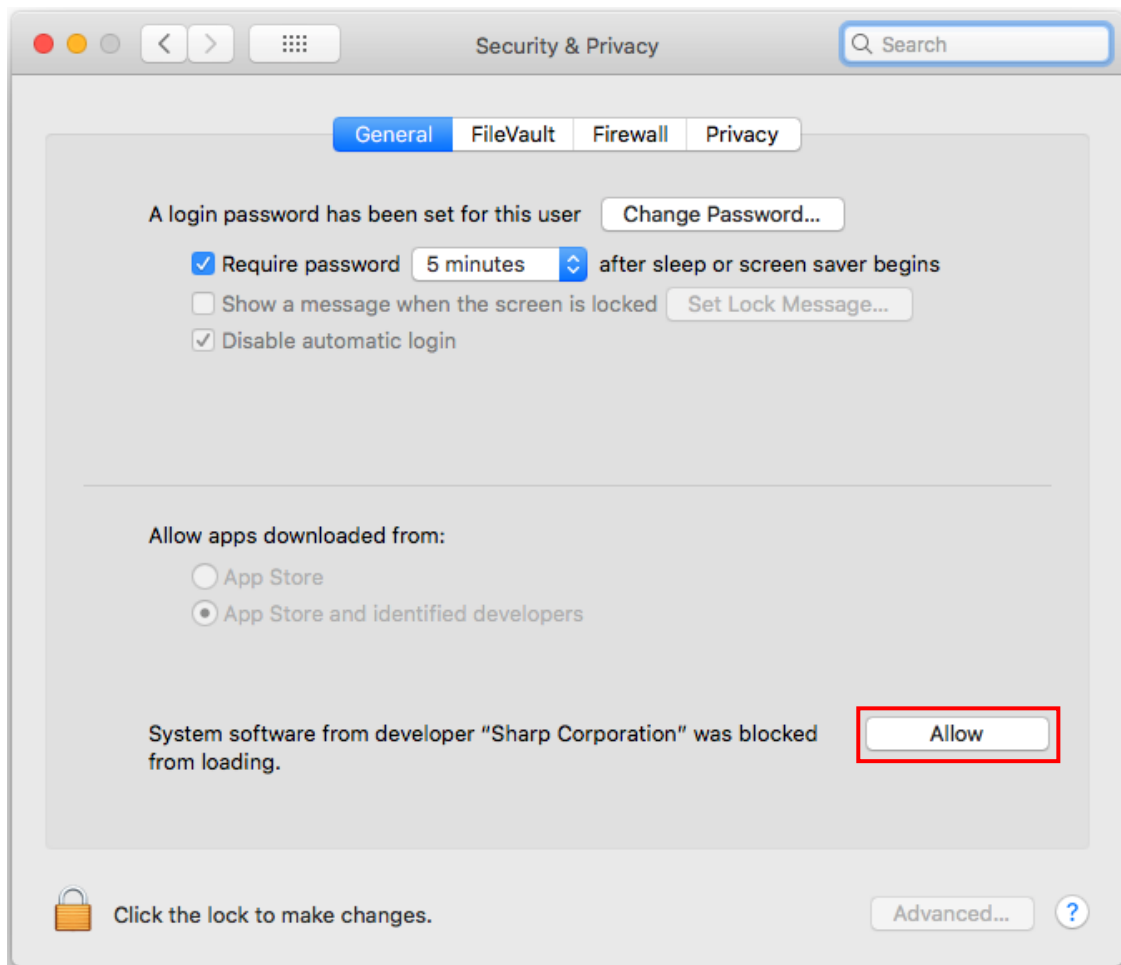
[Note]

- You may not draw smoothly in the refresh rate settings of display under 30Hz.  
When drawing by the touch pen, set the refresh rate over 60Hz.
- You may draw smoothly by invaliding the writing pressure settings of pen in a software where you can set the writing pressure, such as Microsoft OneNote for Mac Version 15.40. You can change the writing pressure settings in the [Pressure Settings] of [Pen] tab.

- During installation, the dialog message “System Extension Blocked” as shown below may appear.



If the message appears, please select “Open Security Preferences” and then execute “Allow” in “Security & Privacy” to enable new extension included in this driver. Otherwise the driver cannot work properly, for example, touch operation will become unstable.



- To enable new extension after the driver installation, you can open Security & Privacy system preference panel, and then execute “Allow”. However, you also need to install the driver again in this case.

#### [Restrictions]

- The SHARP touch display and 1 additional display is the current max allowed to be connected with a Mac computer. Both displays can be used simultaneously.
- The models that support multiple screens are PN-L803C/PN-80TC3/PN-L705H/PN-70TH5/PN-L805H/PN-80TH5.  
Up to two screens can be connected.
- “Ink” located under System Preferences is not available with this touch panel driver.
- The following touch gestures listed below in [1] thru [4] may switch off other touch gestures functions. Suggestions are provided to use switched off touch gestures.
  - [1] When the checkbox for “Spread with thumb and three fingers (show desktop)” is set to ‘off’ , you cannot use the touch gesture function to (close Launchpad).  
To (close Launchpad), you can tap any area of the screen besides the icon.
  - [2] When the checkbox for “Pinch with thumb and three fingers (open Launchpad)” is set to ‘off’ , you cannot use the touch gesture function to (close the desktop).  
To (close the desktop), you can tap the transparent area in the edge of the screen.
  - [3] When the checkbox for “Swipe down with three or four fingers (display App Exposé)” is set to ‘off’ , you cannot use the touch gesture function to (close Mission Control).  
To (close Mission Control), you can use the “tap the screen” .
  - [4] When the checkbox for “Swipe up with three or four fingers (display Mission Control)” is set to ‘off’ , you cannot use the touch gesture function to (close App Exposé).  
To (close App Exposé), you can use the “tap the screen” .
- In order to wake up from the sleep mode with tap operation on the touch display, tap the screen several times.
- Do not touch the touch panel when booting the computer or connecting the USB cable.  
If you touch the touch panel, it will lead to a malfunction. In this case, disconnect and then reconnect the USB cable.
- In case of PN-L501C, PN-50TC1, PN-L401C and PN-40TC1, set the eraser function of touch display to “OFF” .
- Even if the screen shows that the remaining time of installation is less than 1 minute, it may take time depending on the environment.

- 
- \* Apple, Mac, macOS are trademarks of Apple Inc, which are registered in United States and other countries.
  - \* Intel is a trademark or registered trademark of Intel Corporation or its subsidiaries in the U.S.A. and other countries.
  - \* Other company names and product names are trademarks or registered trademarks of respective companies which are registered in each country.